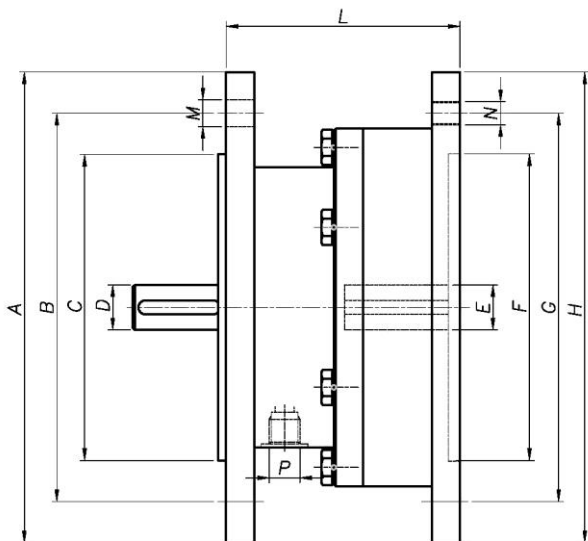


PNEUMATIC SAFETY BRAKE- TYPE FNB/2B5

DESCRIPTION:

The Pneumatic Safety Brake -Type FNB/2B5 is a unit designed for applications with suspended loads. It can be installed both in horizontal and vertical axes. It has a high degree of reliability, a good heat dissipation, quick response and an almost nonexistent residual torque.



Size	Brake torque	Release pressure	Max. pressure	IEC FRAME
FNB-160	25 Nm	4,0 bar	6 bar	71
FNB-200	50 Nm	4,5 bar	6 bar	80/90
FNB-250	100 Nm	4,5 bar	6 bar	100/112
FNB-300	150 Nm	4,5 bar	6 bar	132

Size	A	B	C	D	E	F	G	H	L	M	N	P
FNB-160	160	130	110	14	14	110	130	160	90	4xØ9	4xM8	G1/8
FNB-200	200	165	130	19/24	19/24	130	165	200	100	4xØ11,5	4xM10	G1/4
FNB-250	250	215	180	28	28	180	250	250	125	4xØ14	4xM12	G1/4
FNB-300	300	265	230	38	38	230	300	300	150	4xØ14	4xM12	G1/4

CHARACTERISTICS:

- The brake can be mounted in already existing applications due to its double flange construction, which fits perfectly between the motor and the gearbox.
- The output shaft of the brake incorporates a ball bearing to absorb the radial forces that take place on having mounted pulleys of timing belts.
- The axis is kept fixed at any position, even when the motor is dismantled.
- Safety brake for emergency stops.
- Null maintenance. The friction disc has a minimal wear, even though the brake has frequent connections.
- Compact and light design.

