

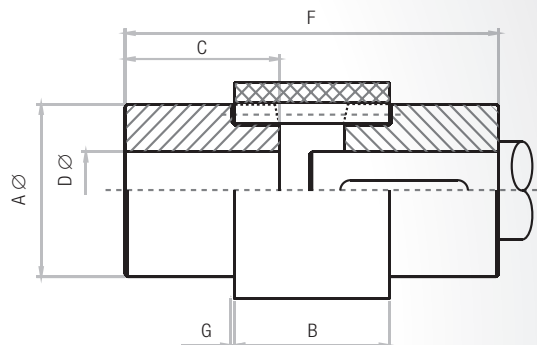
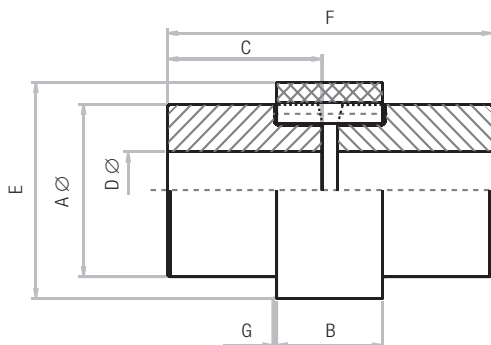
# ELASTIC COUPLINGS

## Models S and LS

- They differ among themselves in the crown length
- The LS model has the crown longer than the model S



### ASSEMBLY EXAMPLE



Type	A mm	B mm	C mm	D mm		E mm	F mm	G mm <sup>(1)</sup>	TORQUE Nm <sup>(2)</sup>	Max V rpm	WEIGHT kg <sup>(3)</sup>	Z
				min	max							
S. 16 LS. 16	33	21 31	25	7	16	41	52 62	1	3,6	10,000	0,325	20
S. 19 LS. 19	40	25 38	30	8	19	51	62 76	1	10,5	8.200	0,450	18
S. 24 LS. 24	48	35 50	35	10	24	61	72 86	1	21,5	7.500	0,775 0,785	22
S. 28 LS. 28	52	37 59	38	12	28	67	78 98	1	47,8	7.100	1,010 1,025	24
S. 32 LS. 32	60	38 77	40	12	32	75	82 122	1	68	6.800	1,350 1,370	22
S. 38 LS. 38	65	41 74	45	14	38	84	92 126	1	100	6.600	2,010 2,035	24

Z = number of teeth.

(1) Assembly set between pinions and crown.

(2) Maximum permissible torque at peak is 40 times higher than indicated.

(3) The weight indicated in this column is for the coupling with minimum bottom diameter.