

ELASTIC COUPLINGS

Models O and L

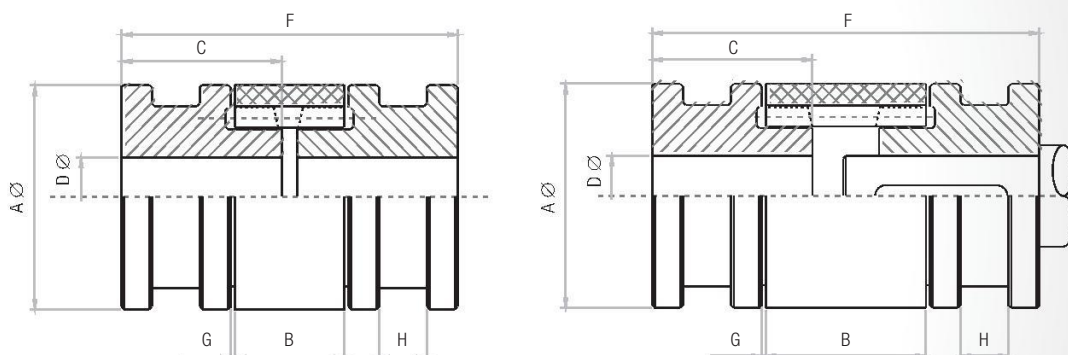
- **Economical**
- **Easy to install and align**
- **Strong and silent**
- **No maintenance required**
- **Elastic**



Description

Elastic couplings **nil-uni3n O and L models** differ in the length of the crown. L model has the longest crown and is especially suitable for use between any receiving machine and an electric engine. A coupling pinion can be mounted on the engine shaft without putting in a supplementary cap. Thanks to the coupling length, the engine shaft is about 2 mm of the second coupling pinion. The trench (H) can be used to support the legs of an extractor.

ASSEMBLY EXAMPLES



Type	A mm	B mm	C mm	D mm		F mm	G mm ⁽¹⁾	H mm	PAR Nm ⁽²⁾	Max V. (rpm)	WEIGHT kg ⁽³⁾	Z	
				min	max								
010	28	16	23	5	10	47	1	-	1,5	12.000	0,140	12	ZAMAK
012	32	17	25	6	12	51	1	-	2,4	12.000	0,200	12	
014	36	21	30	7	14	61	1	-	4,7	10.000	0,350	12	
019 L19	46	25 36	35	10	19	71 82	1	8	9,5	8.000	0,600 0,610	14	CAST
024 L24	56	31 52	40	12	24	81 102	1	10	19	7.500	0,920 0,950	16	
030 L30	66	37 51	50	14	30	102 116	1	12	38	7.000	2,080 2,100	16	
038 L38	84	41 60	60	16	38	124 140	1	18	95	6.500	3,300 3,450	16	
042 L42	92	47 87	70	18	42	140 183	1,5	18	118	5.500	4,940 5,090	18	
050 L50	106	51 84	80	24	50	164 193	1,5	20	166	4.000	7,600 7,730	20	
060 L60	122	60 110	90	28	60	181 230	1,5	25	237	3.500	11,250 11,370	24	